



GyckBook NO.: 50 automati

constructed reality
reality under construction

series

reality

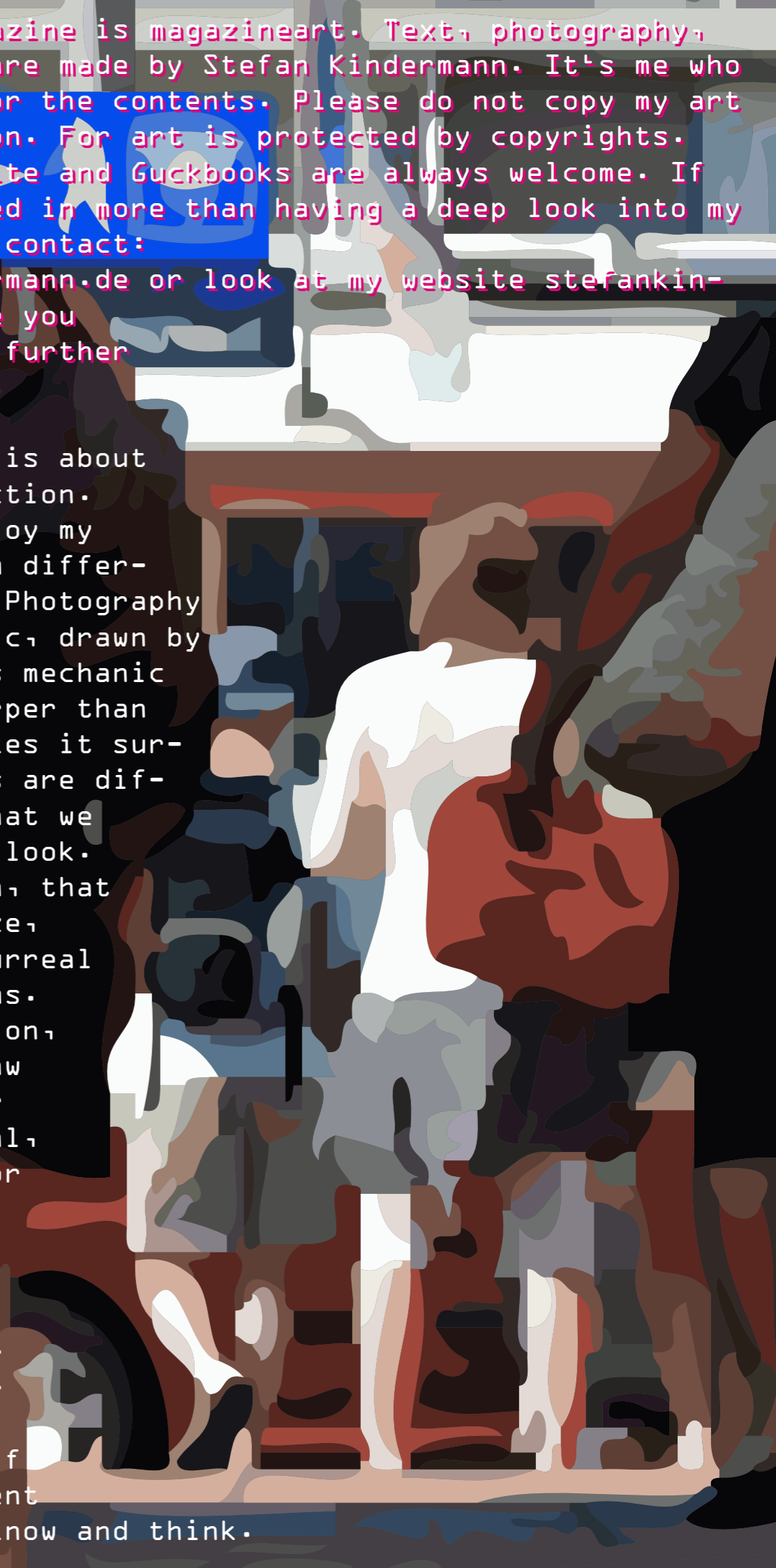
Series // Zandvoort / Stations



Series//Zandvoort / House at the beach

GuckBook art magazine is magazineart. Text, photography, and graphic art are made by Stefan Kindermann. It's me who is responsible for the contents. Please do not copy my art without permission. For art is protected by copyrights. Links to my website and Guckbooks are always welcome. If you are interested in more than having a deep look into my Guckbook, please contact: info@stefankindermann.de or look at my website stefankindermann.de, there you find the path to further publications.

This ARTmagazine is about automatic abstraction. Hope you will enjoy my work. Things seem different as they are. Photography looks like graphic, drawn by the machine. This mechanic drawings are sharper than reality, that makes it surreal. The details are different to that what we see with a short look. It is abstraction, that makes us recognize, the reality in surreal and abstract forms. As it's abstraction, that makes us draw things out of our minds with surreal, geometric forms or symbolic items. Abstraction connects the things we see with that we know. Abstraction make us recognize and realize things also if they look different to that what we know and think.



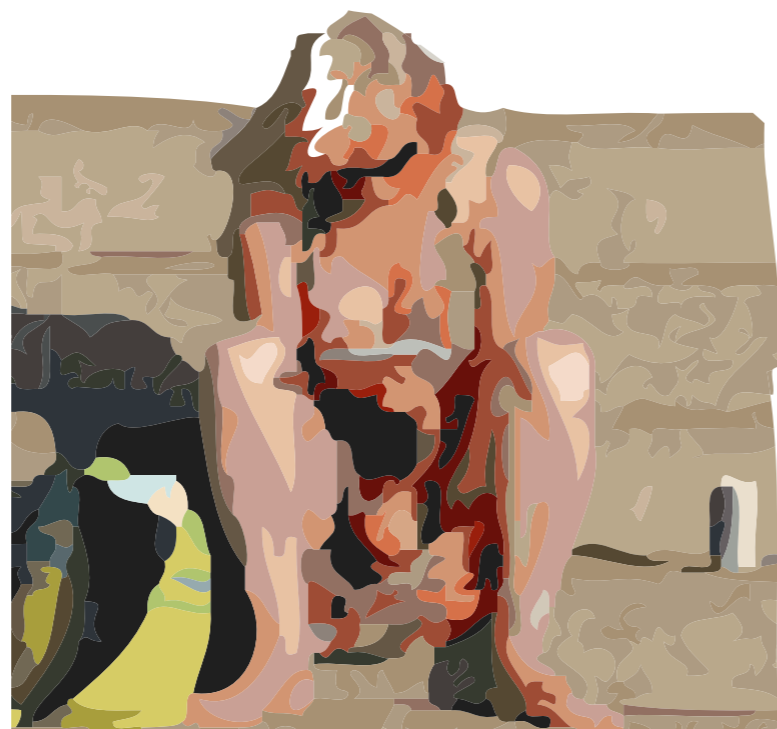
Seaview



Numbers and geometric forms are abstract. Constructing with geometric forms or objects needs abstraction. Looking to reality, we see it abstract for we see things different as they are and as there is looked upon from other ones. Our point of view displays a cut of the reality only. Knowledge opens our minds for more knowledge. We can think abstract.

Leaving the station in Zandvoort, we see a high building. Going forward we see it from the other side, we are at the beach. So if

we know and see that building, we know we are at the beach. If we see that building from far away, we know where the beach is. Buildings are marks in the landscape. Many abstract buildings change the landscape to an abstract constructed environment, in which we learned to live. Signs and symbols are abstract and they give us orientation in an abstract world. Missing that orientation we get disoriented. Nature is not geometric constructed. Orientation is different. There are no abstract signs, symbols and numbers. We see the moon is round. Knowing the rules of physics, we believe, it is round for the rules of gravity. We believe what we know, for we know what we believe, but sometimes it is different, as we see, when we progress and change the point of view. We learn to know the difference by time. If we believe to know better as we see, we do not learn. It seems as we believe, if we don't know what we see. We believe in miracles but most miracles are only illusions. When we progress by time we see the rules of nature behind.



Booklook

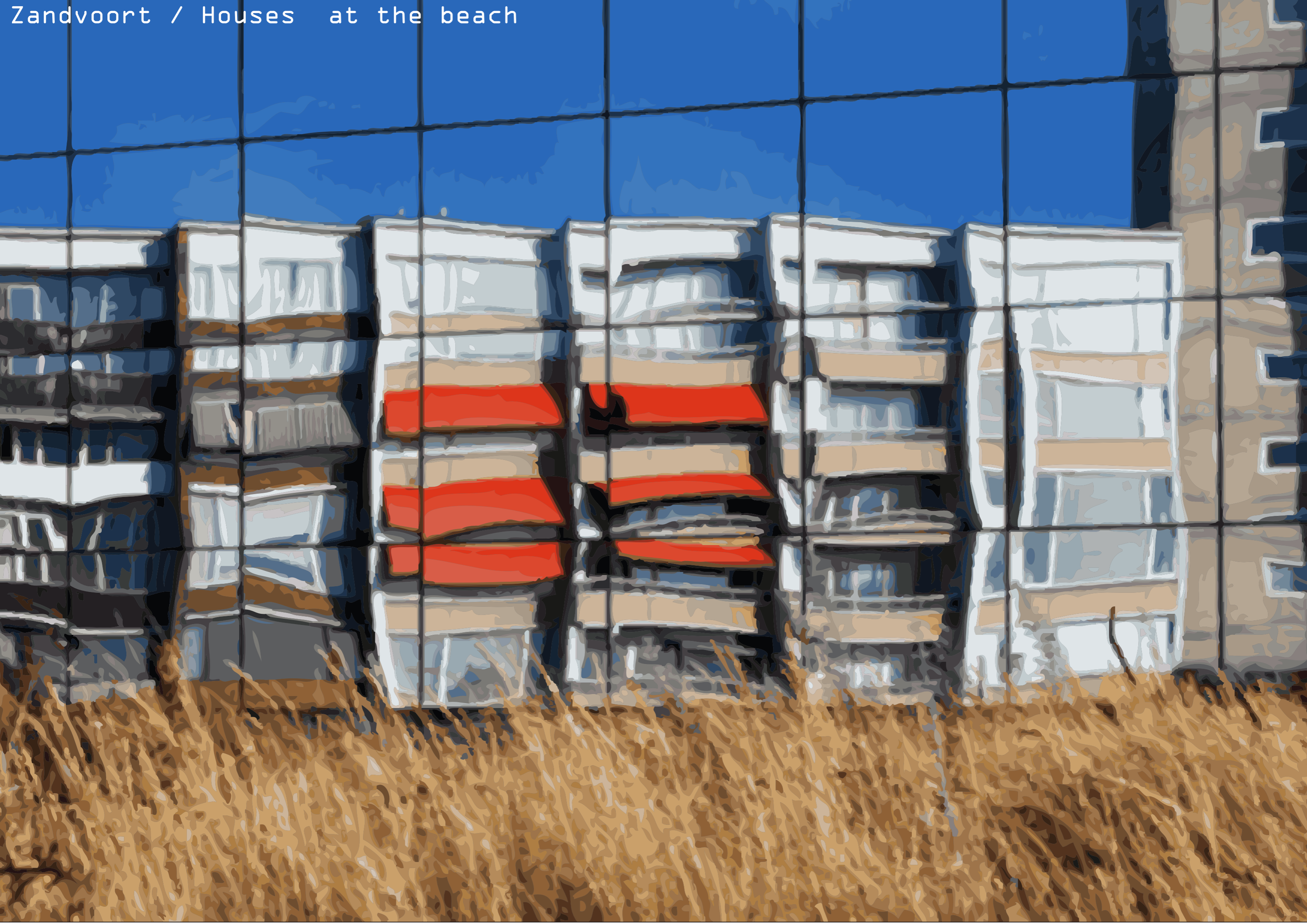
Zandvoort // House at the beach







Zandvoort / Houses at the beach



Zandvoort / House at the beach



Zandvoort / Houses at the beach







It's de style, that forms the beach town Zandvoort and it is the architecture, that forms the view of the landscape around. Looking back, it is the spirit of the time that leaves stains in the view of our history we have today.

The colours of the blue sky, the white buildings and red and orange tell, where we are. Geometric constructions and symbolic colours create the image. Nature is not the dominating factor in this construction. Today architecture should be different. We should have learned. But that makes no difference to the art of de Style of Zandvoort, a beautiful landmark, a sign of time in the history of architecture. An urban statement of human art and culture at the borderline of wild nature, the sea. When the tide rise, Sandforts get washed by the sea as art gets washed by the time.





uitgang

Information display board



From Station to Station is a title from David Bowie. I'm reminded doing this series about stations, while I'm going from station to station.

Stations are Gates of cities. Arriving at a city they display the first view or when leaving the last while the departure. That buildings are key - impression for coming or leaving people, or those that passing by a city in the train. Stations are statements of the spirit of the time when they were build. Stations transfer history of architecture, style and image and their spirit through time and space from station to station. Stations are places where people meet, come and go. Stations are connecting people being connected by trains. Many people are passing by, transporting the images they got from city to city. A station transfers the image, out of the time it got build, to the people that are living in the city today. Cathedrals, mosques or temples are a manifestations of religions. Stations a manifestation of technics, we do believe in.

Stations reminding people to places they have been and they are connected with. So I took some images with me from stations from cities and people in and around stations. It is a long time series, based on photographic converted to graphics. I did it this way, to display people anonymously and to simplify and reduce the images to the elementary composition. Contents and contend happening by my view to the things I see, the environment around and the moments of creation.

Stations // coming to Amsterdam







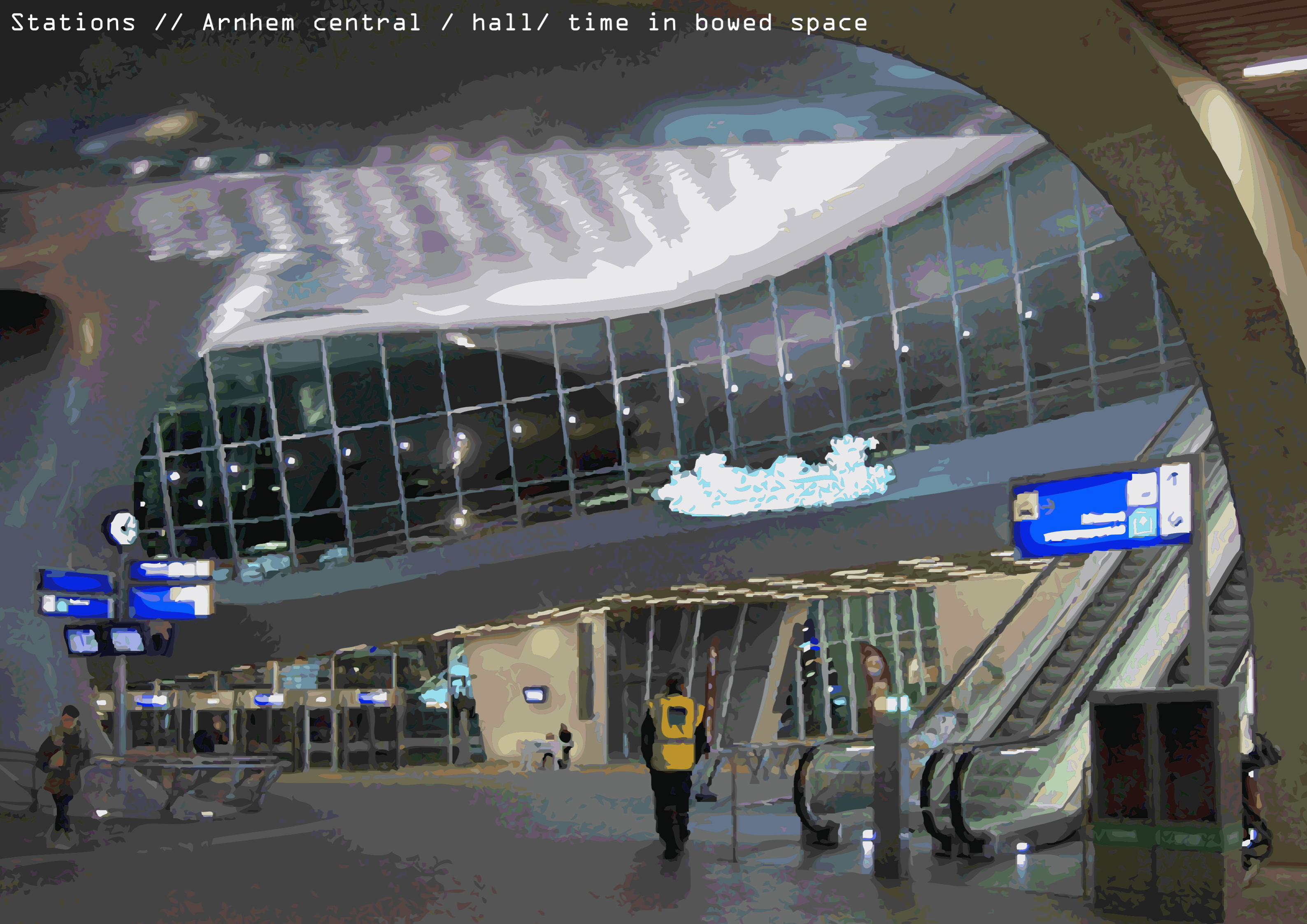


Stations // Amsterdam departure

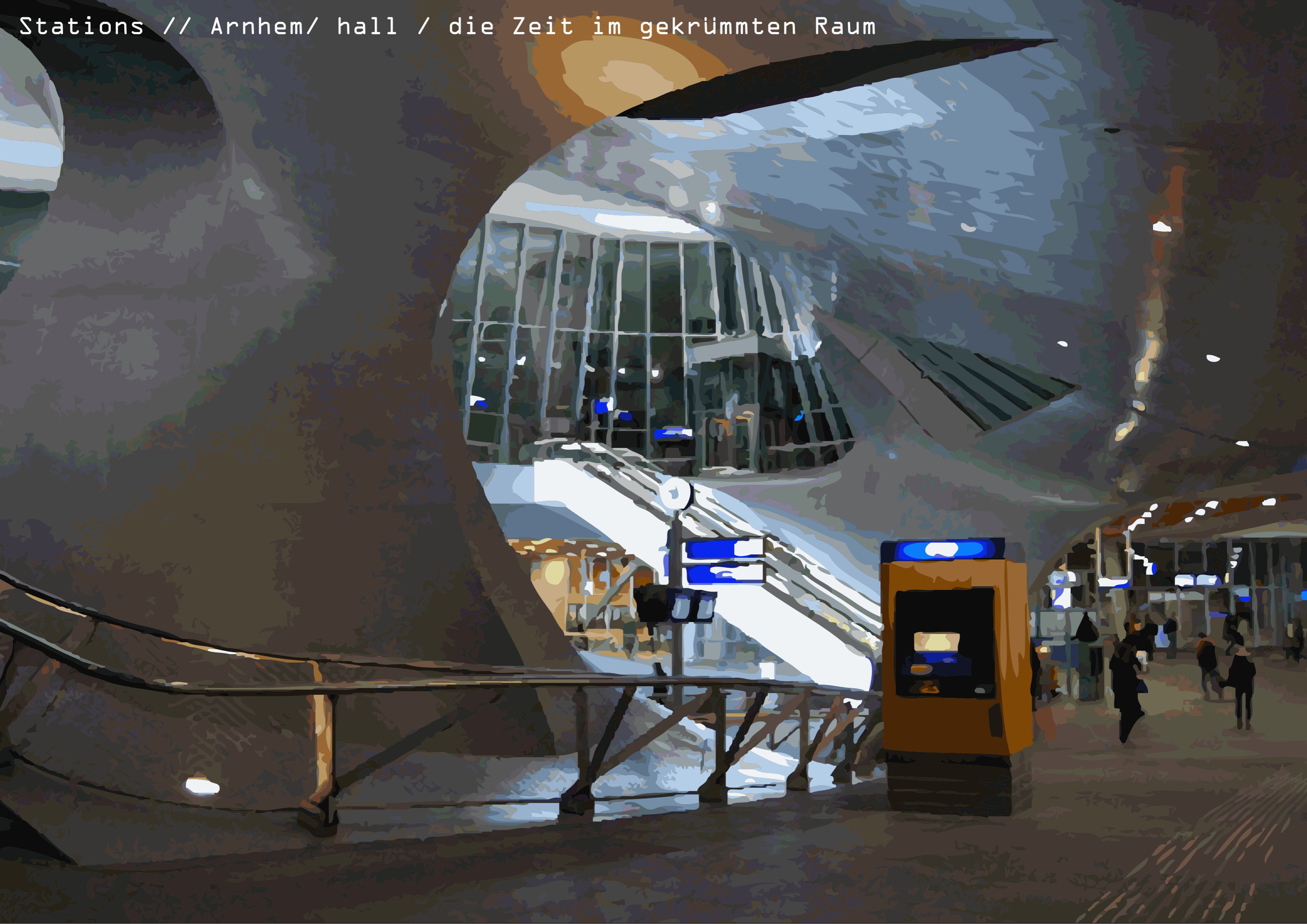
Stations // House in the bank - bankhouse



Stations // Arnhem central / hall / time in bowed space



Stations // Arnhem/ hall / die Zeit im gekrümmten Raum



Stations // Arnhem / leaving the train









Emmerich



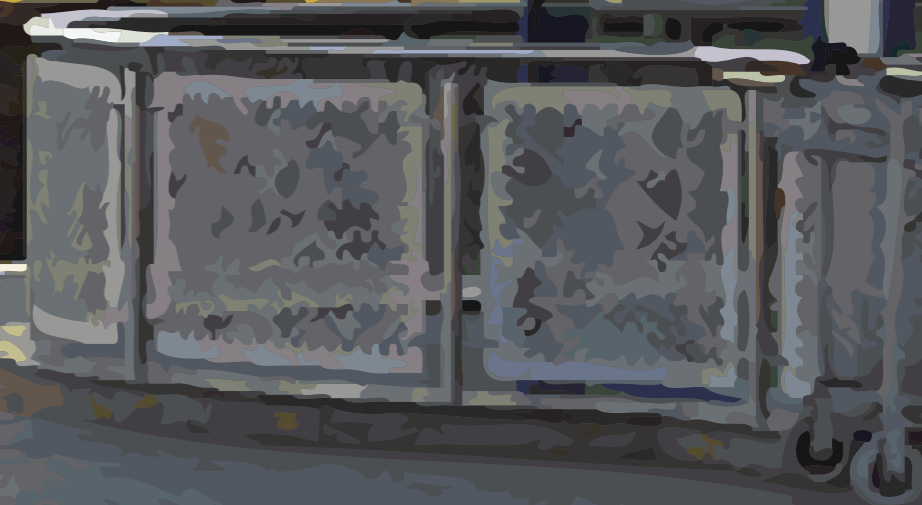






Duisburg Hbf

Clas







Stations // Düsseldorf Hbf

U78
Messe Düsseldorf
Basis for Business
Willkommen
Welcome

12 S

S 12



Stations // Düsseldorf / tunnel



Stations // Düsseldorf, 17 cutout



Stations // Düsseldorf platform 17












Raucherbereich
Smoking Area



E

Ausflüge & Reisen

Smoking Area

Smoking Area





Lincoln Center

LIN HOF

Stations // FrankfurtHBf/
bank-view / skylines



Frankfurt/airport



Stations // Frankfurt Hbf / -bank-housing



Stations //
Frankfurt Hbf / hall



mit Karte in umgekehrter Richtung

Flughafen/Airport  -
Münster - Siegburg/Bonn

15:17
ICE 018

Köln Hbf

ABCDEF




Stations // Frankfurt Hbf

19





Frankfurt Hbf / Skylines at the station



Frankfurter Allgemeine Zeitung

ZITUNG FÜR DAS GANZE LANDE



Frankfurt Hbf / Headlines at the station

Stations // Frankfurt airport





GARE DE NICE VILLE



399

Advertisement text on a red poster.

SNCF

Advertisement text on a poster.





QuickBook NO.: 50 automati

constructed reality
reality under construction

reality

reality

Series // Zandvoort / Stations